

Stay fit, keep healthy. One day out for the whole department ... before the Christmas lockdown!



Age-related macular degeneration and diabetic retinopathy: Mr Zambarakji manages age-related macular degeneration and provides treatment with anti-VEGF injections with Avastin, Ongavia, Eylea and Vabysmo. All intravitreal injections are provided as a one-stop service to reduce the need for multiple clinic visits.

We also provide a comprehensive diabetic retinopathy service including the assessment of retinopathy, imaging using colour photography, OCT, fluorescein angiography and OCT angiography (OCT A avoids the need for intravenous fluorescein injections used as part of standard fluorescein angiography) and laser photocoagulation/intravitreal injections.



Meet the team (L to R): Raj, Vickie, Alessandra and Hadi

Practice overview:

Retinacare is an independent private practice based at both The Holly Private Hospital and the Spire London East Hospital, providing adult Ophthalmology services with a comprehensive back up service including:

- Retinal laser 532 nm
- Zeiss Nd:Yag laser for performing capsulotomy or laser iridotomy
- Zeiss OCT imaging including OCT angiography to replace fluorescein angiography
- Zeiss retinal photography (off site)
- Zeiss Humphrey visual field analysis
- Corneal pachymetry
- Pentacam corneal topography (off site)

Specialists services include:

- Small incision phaco cataract surgery including complex cataract surgery (small pupils, pseudoexfoliation, unstable lenses, high myopia, previous vitreoretinal surgery, floppy iris syndrome and co-existing diabetic retinopathy)
- Age-related macular degeneration treatment using anti-VEGF injections (Avastin, Ongavia, Eylea or Vabysmo)
- Diabetic retinopathy assessment and treatment using retinal laser photocoagulation and intravitreal injections (including Ozurdex and Iluvien)
- Vitreoretinal disease assessment and surgery including posterior vitreous detachment, retinal detachment, vitreomacular traction, epiretinal membrane and macular hole
- Retinal vascular disease assessment and management
- Glaucoma diagnosis and assessment
- Minor eyelid cysts

Mr. Zambarakji and Retinacare Ltd are recognised by all UK private insurance companies. The fees quoted in this leaflet are for self-pay patients and are accurate at the time of writing. We also have cataract surgery insurance packages agreed with BUPA, Axa PPP, Aviva, Vitality and Cigna.



The Practice of Hadi Zambarakji

Office address
Spire London East Hospital

Roding Lane South

Ilford, Essex IG4 5PZ

Tel: 07947 578480

Email: info@retinacare.org.uk

Web: retinacare.org.uk



Fee schedule (January 2025)

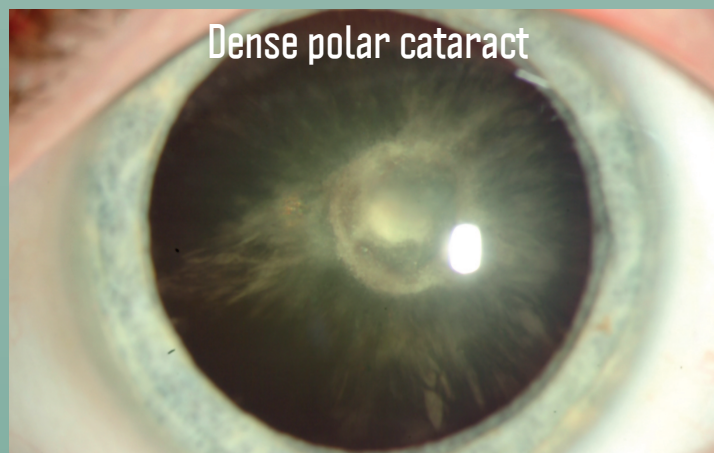
Correct at the time of printing

(January 2025)

Mr. Hadi Zambarakji
MB ChB, FRCOphth, D.M

Office

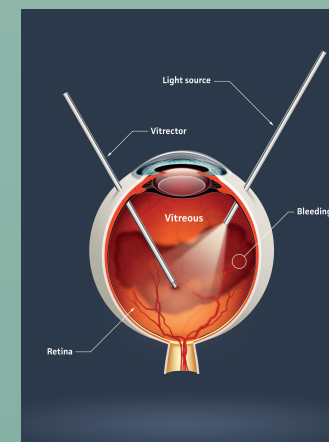
Vickie Hopkins, Alessandra Giordani and Joy Andrews
Specialist Hospital Optometrist: Raj Bharaj



Dense polar cataract

CATARACT SURGERY PHILOSOPHY

Mr Zambarakji provides a comprehensive cataract surgery service with special emphasis on the patient's personal needs. All patients are given a cataract questionnaire with particular emphasis on details including their requirement to be spectacle independent, dependence on driving, hobbies and occupation. Complex cataracts and previous refractive surgery are assessed using Pentacam topography/biometry and I-trace in Central London.



3 port Vitrectomy set up for retinal surgery. In this schematic we show a vitreous haemorrhage secondary to proliferative diabetic retinopathy

CATARACT SURGERY PACKAGE

Lens type (self pay prices)	Charges
Cataract surgery package using a monofocal lens implant (Tecnis from J&J) - includes biometry (lens measurement), hospital fees, surgeon fees, anaesthetic fees and first post-operative visit (Nuffield - The Holly or The Spire Hospitals).	Spire - From £2,590 no sedation; £2,896 sedation. Nuffield The Holly - From £3,059
Premium lens implants including Toric, enhanced monofocal and multifocal lens implants are charged separately by the hospital (costs vary depending on lens).	£130-£800
Hospital investigations	Charges
OCT (retina and optic discs)	£170-£180
OCT angiography	£250
Fluorescein angiography (London Medical)	£453
Humphrey visual field	£115-£132
Colour fundus photography	£95
Insertion punctum plugs (surgeon fees)	£60

CONSULTATION AND OUT-PATIENTS PROCEDURES

Consultation and Procedures	Charges
Consultation New/F-up - The Holly and The Spire Hospitals	£240/£180
Pan retinal laser /macular laser (incl surgeon fee) - The Spire London East Hospital (unilateral)	£900
Intravitreal Byooviz (off patent Ranibizumab; incl OCT and surgeon fee) - Nuffield The Holly	£1,200
Intravitreal Avastin (incl OCT and surgeon fee) - The Holly hospital	£785
Intravitreal Eylea/Vabysmo* (incl hospital fee, OCT and surgeon fee) - The Holly hospital	£1,650/£1,950*
VAG laser capsulotomy unilateral	£400-£537
VAG laser iridotomy (unilateral)	£862 (Spire) - £910 (Nuffield The Holly)
Pentacam and I-trace cornea imaging-Harley Street	£175

VITREORETINAL SURGERY

Retinal detachment, macular hole, epiretinal membrane, vitreous haemorrhage and retinal detachment associated with diabetic retinopathy. This is performed at the Hospital of St. John's and St. Elizabeth but all follow-ups can be either at Nuffield The Holly, The Spire or in London at the London Medical or St. John's and St. Elizabeth Hospital.

CATARACT SURGERY PHILOSOPHY (CONT.)

Different types of lens implants can be considered at the time of cataract surgery based on the planned refractive outcome. Example 1: Cataract patient with low myopia and long-term contact lens wearer with monovision correction. Management 1: Monofocal lens implants with correction of the dominant eye for distance and the non-dominant eye for near. Example 2: Hypermetropic patient, non-driver, no astigmatism and wishes to be spectacle independent. Management 2: Panoptix lens implants for good vision at all distances including distance, intermediate and near. Example 3: Cataract patient with moderately high myopia and regular astigmatism. Management 3: Bilateral toric lens implants aiming for emmetropia or monovision.

PLEASE HAVE A LOOK AT OUR VIDEO AND INTERVIEWS SECTION:

<http://retinacare.org.uk/videos-and-interviews/> or go to our Vimeo page <https://vimeo.com/retinacare>